



Fond du Lac
920-923-4433

Oshkosh
920-235-0095

Fox Valley
920-202-8360

Green Lake
920-294-0121

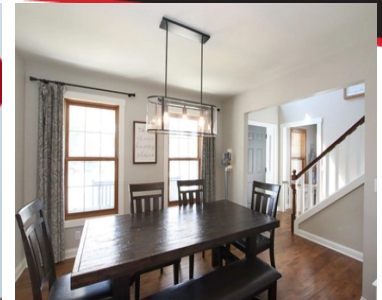


www.adashunjones.com



Gail Sharpe
Cell: (920) 948-9414
gail@adashunjones.com

Est. Monthly Payment
(Based on 10% down payment)
15 yr. mortgage: \$2,477.89
20 yr. mortgage: \$2,049.21
30 yr. mortgage: \$1,641.20



411 MARY LEE DR FOND DU LAC WI 54935-1826

\$359,900 MLS# 50263552

Listed by: Adashun Jones, Inc.

If you are looking for a stunning, modern Farmhouse style 2 story home in the city, this is it! From beautiful curb appeal to opening the front door this home will knock your socks off! Home features gorgeous kitchen w/ white cabinets, island and amazing work space! Great room with fireplace and ample seating area. Main floor study which makes an amazing play zone! Upstairs features 3 bedrooms including master with private bath and walk in shower. Lower level rec room to spread out and unfinished storage area. Look for the open front porch and the black shutters.

FEATURES

County	Fond du Lac
Muni.	City of Fond du Lac
Acreage	0.23
Source of Acreage Info	Assessor/Public Record
Zoning	Residential
Taxes (2021)	5,929
Total Sq. Ft.	2,261
Above Grade Sq. Ft.	1,902
Below Grade Sq. Ft.	359
Age/Year Built	1997
Exterior Finish	Vinyl
Style	2 Story
School Dist.	Fond du Lac

ROOM SIZES

Room, Dimensions, Level	Room, Dimensions, Level
Master Bedroom, 13x13, Upper	Kitchen, 15x11, Main
Bedroom 2, 11x11, Upper	Formal Dining Room, 11x10, Main
Bedroom 3, 11x11, Upper	Living Room, 15x12, Main
Dining Room, 14x7, Main	Den/Office, 11x11, Main
Laundry Room, 8x6, Main	Rec Room, 25x14, Lower

AMENITIES

Type	Residential
Heating/Cooling	Central A/C, Forced Air
Waste	Municipal Sewer
Water	Municipal Public Water
Basement	Full, Partial Fin. Contiguous
Garage Style	Attached-NonTandem
Garage Spaces	3 or 3.5 Cars
Garage Total	3

INCLUSIONS / EXCLUSIONS

Inclusions; Range, Refrigerator, Microwave, Dishwasher, Washer, Dryer, Water Softener, LL Couch, Playset, Blinds
Exclusions; Seller's Personal Property, TV & Mounts, Nursery Blackout Curtains

DIRECTIONS

Rienzi Rd. to Mary Lee Dr., N. to Address



This information, provided by seller, listing broker, and other parties, may not have been verified
In our opinion the information on this sheet is true but not guaranteed, and is subject to change or correction at any time.

